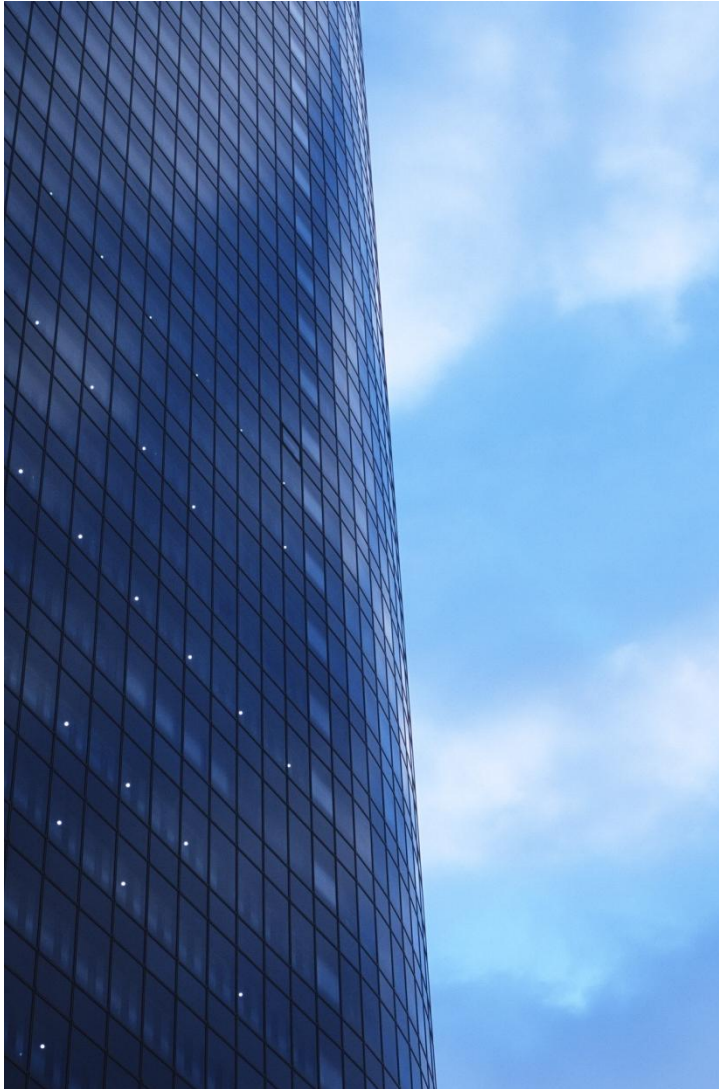


# Oracle数据库 RMAN备份与恢复最佳实践



# 蒙马公司简介



2010-

- Oracle OPN
- ISO9001
- MEMA

2006-2009

- Oracle OPN
- Oracle BI
- Oracle
- Oracle

2002-2005

- Oracle
- Oracle
- Oracle OPN



# 介绍纲要



1. Oracle

2. RMAN

3. RMAN

4. RMAN



- 
- Oracle



# -EXP/IMP



## 优点：

- 
- 

## 缺点：

- 

EXP/IMP

TB

EXP/IMP

# -RMAN



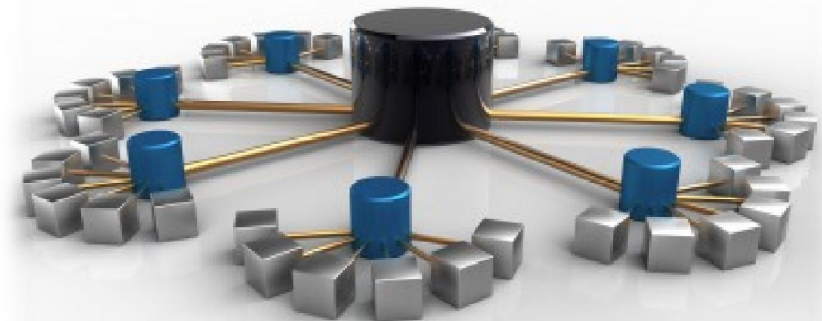
**RMAN**(Recovery Manager)

Oracle

Oracle

RMAN

- 
- 
- 
- 



# 介绍纲要



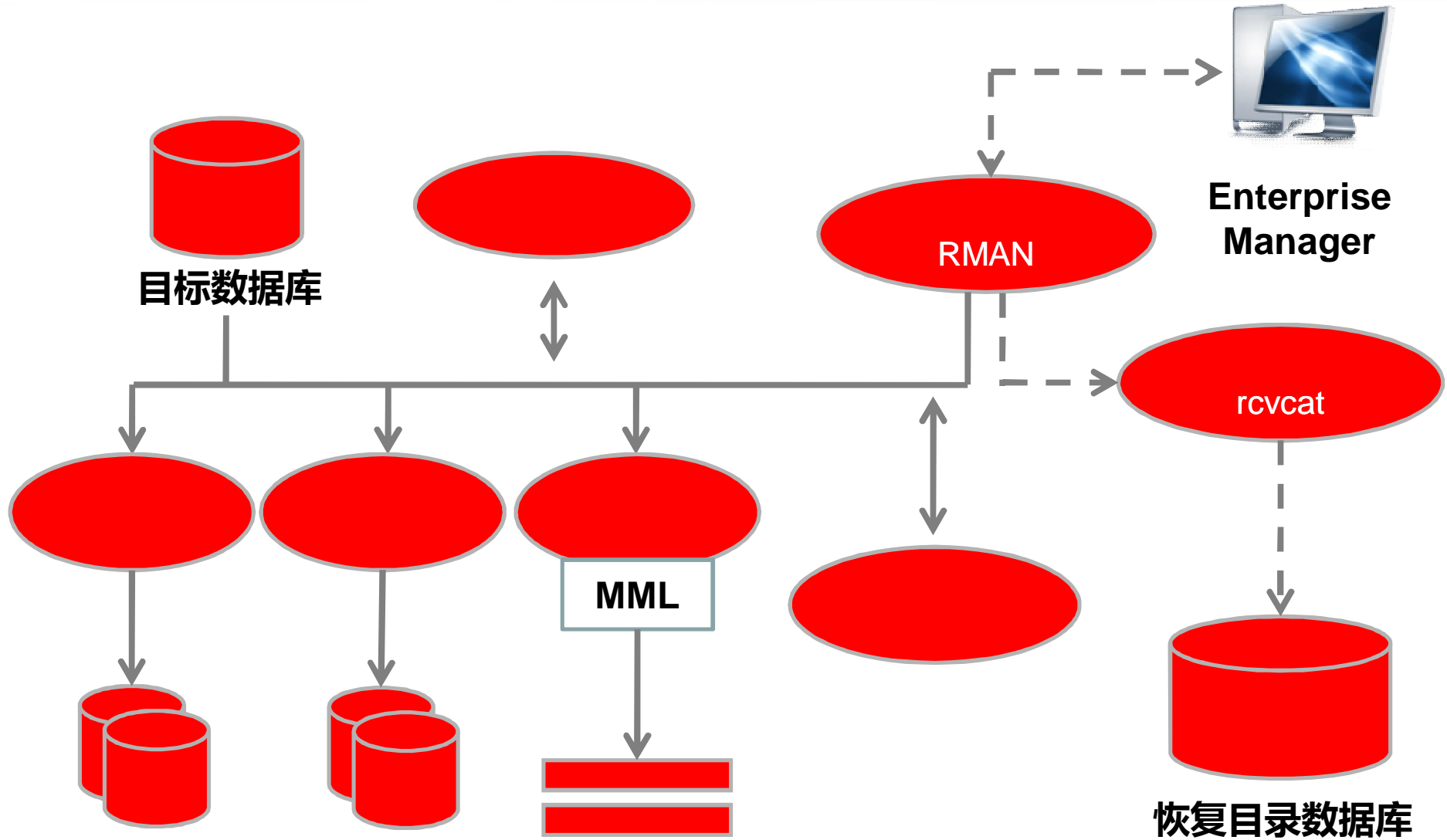
1. Oracle

2. RMAN

3. RMAN

4. RMAN

# RMAN







# RMAN



## 3.RMAN

RMAN

RMAN

RMAN

RMAN repository

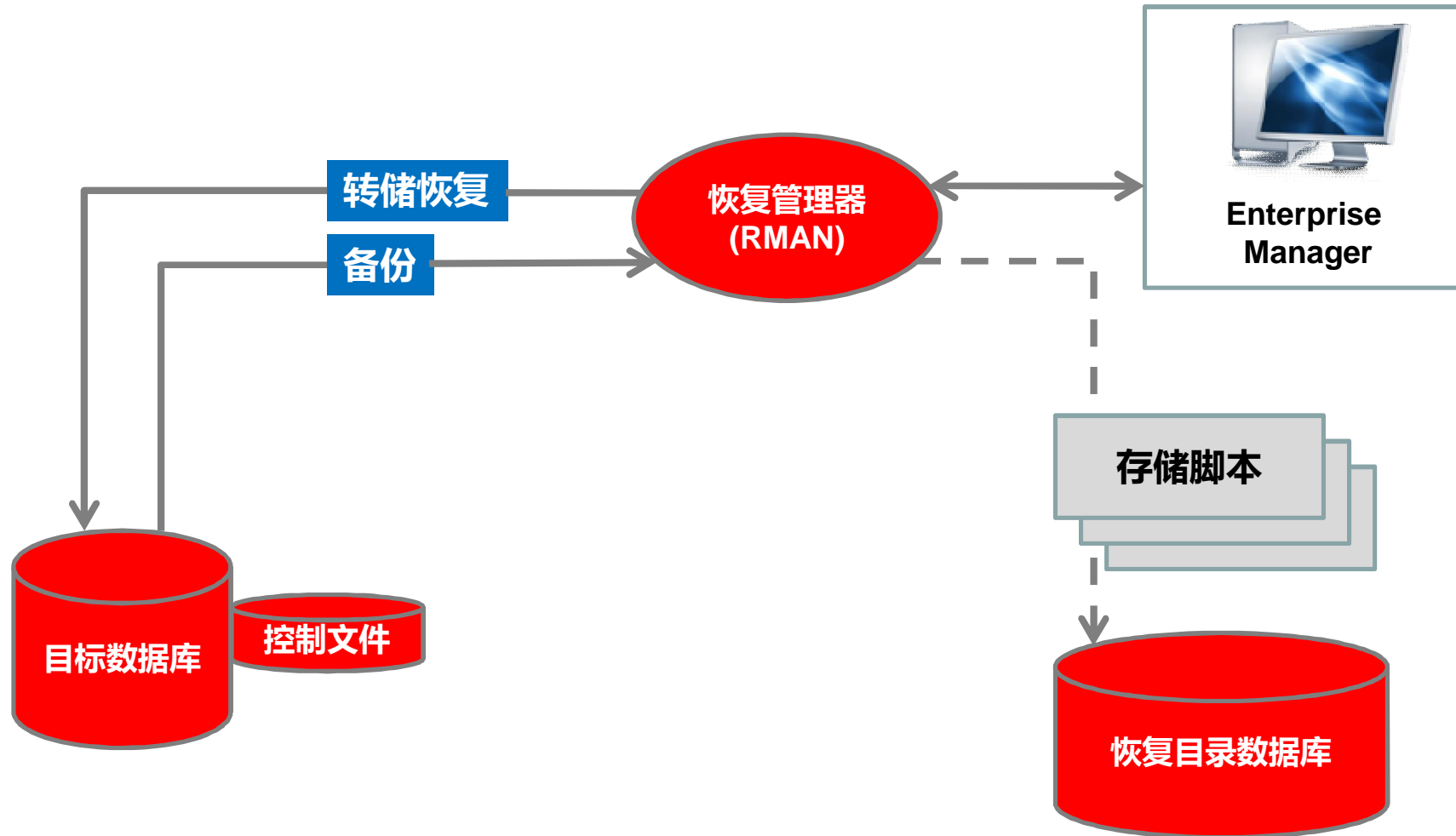
## 4.RMAN

RMAN

RMAN recovery catalog

RMAN

# RMAN-



# RMAN-



a)

RMAN

b)

c)

nocatalog

RMAN

RMAN

d)

# RMAN



5.

standby database

6.

media manager RMAN

SBT

# 介绍纲要



1. Oracle

2. RMAN

3. RMAN

4. RMAN

# RMAN



RMAN

(RMAN)

Oracle

RMAN

1.

RMAN

Oracle

RMAN

RMAN

# RMAN



2.

RMAN

3.

RMAN

RMAN

RMAN

4.

RMAN



# RMAN



5.

RMAN  
Oracle

API

RMAN

6.

RMAN LIST REPORT

7. Oracle

# RMAN



8.

9.

RMAN

10.

RMAN      VALID

11.

RMAN      CROSSCHECK

# 介绍纲要



1. Oracle

2. RMAN

3. RMAN

4. RMAN

# RMAN



## RMAN备份方式

### 完全备份

全备份(Full Backup)是指对数据文件中使用过的数据块进行备份，没有使用过的数据块是不做备份的，也就是说，RMAN 进行备份是进行压缩的。

### 增量备份

增量备份(Incremental Backup)是指备份数据文件中自从上一次同一级别的或更低级别的备份以来被修改过的数据块。与全备份相同，增量备份也进行压缩。

# RMAN



**备份集**

**镜像副本**

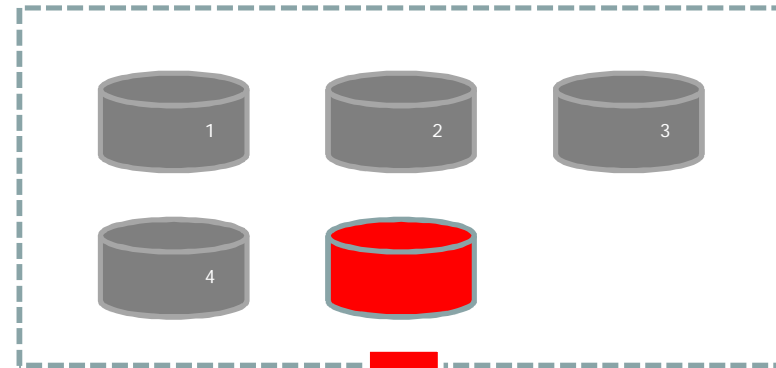
# RMAN

# (Backup Set)



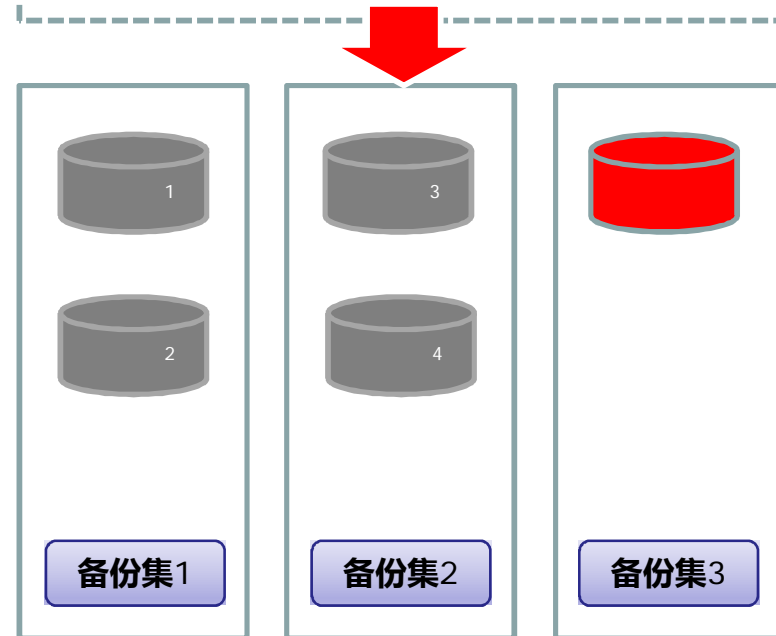
1.

Oracle



2.

RMAN



3.

RMAN

# RMAN

# (Backup Piece)



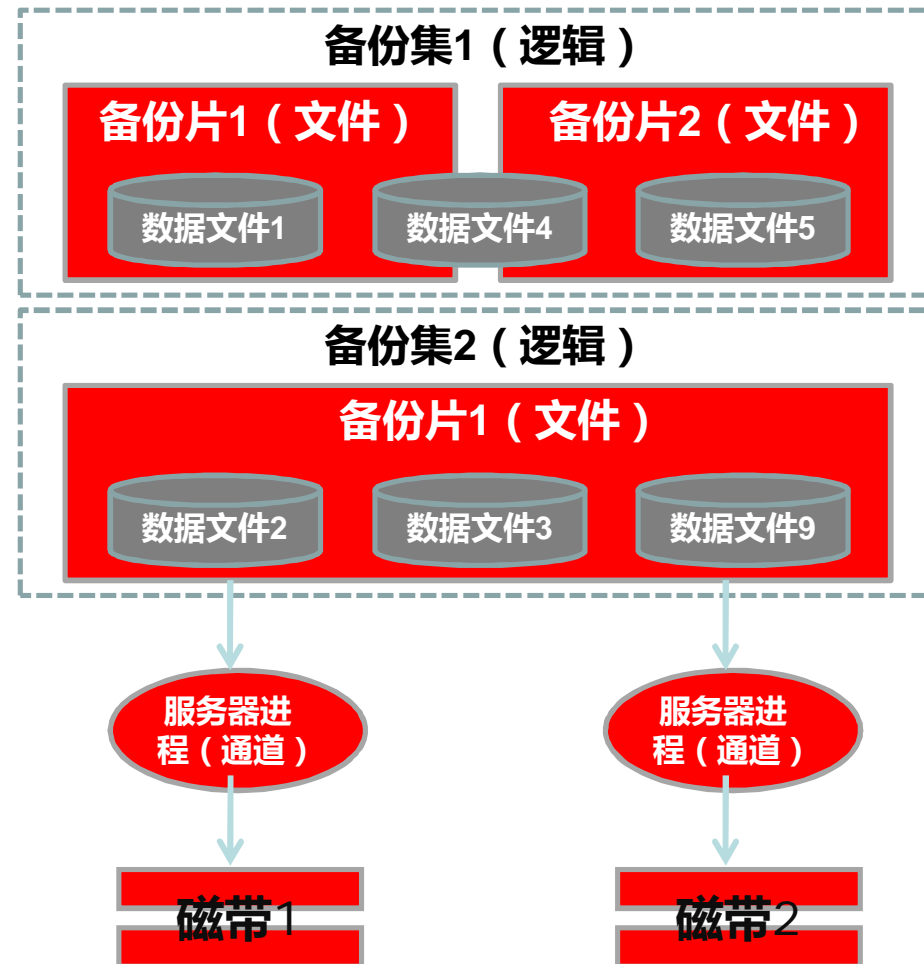
1.

2.

3.

4.

OS



# RMAN

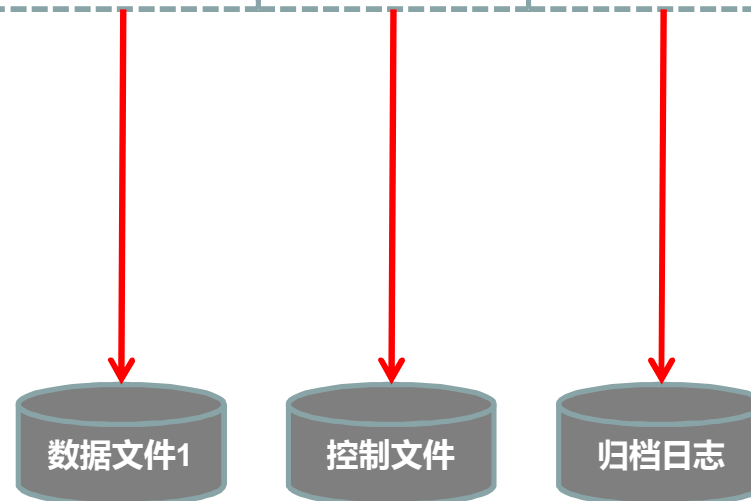
## (Image Copy)



1.



2.



3.



# RMAN



COMMAND LINE

GUI

OEM

API

# RMAN



- ✓
- ✓
- ✓
- ✓
- ✓
- ✓
- ✓



# MEMA

